

Maitrijusha Master Level Symbols



Volume 1
Maitrijusha &
Maitrijusha-Ni

Love Inspiration & Maitri Foundation



Love Inspiration

Learn • Heal • Awaken

DEDICATED TO MAITRI GURU
FOR THE INFINITE BENEFIT OF ALL.



Copyright © Love Inspiration

Prerequisites For This Ebook



Welcome!

Please ensure that before you begin this Maitrijusha Master Level Symbols course you:

- 1) Are a Master of one healing system (i.e. have completed and become a 'Master' of Divine Light, Kundalini Reiki, Usui Reiki or Karuna Reiki).
OR
Have completed the first volume of an Ascension Pathway (i.e Pathway To Light, Volume 1 - The Golden Mile or The Unified Pathway To Light, Volume 1 - The Celestine Series).
- 2) Have allowed yourself a minimum of 21 days from the completion of:
 - any [Ascension Pathway](#) attunement and/or
 - any Love Inspiration [ebook](#) (eg. Divine Light, Kundalini Reiki, Usui Reiki etc)

(Note that here in this point, the completion of an ebook means you have completed the whole ebook including all attunements, waiting times and compulsory daily / self healing practices, whereas the completion of an attunement means you have completed the attunement and not necessarily any waiting times or associated practices.)
- 3) Have activated (unlocked) the Maitrijusha & Maitrijusha-Ni energies and attunements using the activation code & instructions on the next page.

***Once you have unlocked the energies, you are ready to begin.
With love, we wish you well on your Maitrijusha Master Level Symbols journey!***

Helpful Resources For This Ebook

[Sign up for free monthly Ascension Healing \(sent on the 11th of the month\)](#)
[Join the Love Inspiration Community Facebook Group](#)
[Download the Love Inspiration Handbook as an accompaniment to this ebook](#)
[Start on the Ascension Pathway alongside this ebook](#)
[Visit our Free Music & Relaxation webpage](#)
[Sign up for an Ascension Healing Booster](#)
[Find out how you can help](#)
[Read our Disclaimer](#) and [Copyright Information](#)

ACTIVATING (UNLOCKING) THE MAITRIJUSHA & MAITRIJUSHA-NI ENERGIES:

Before opening up to these beautiful Master Level Symbol energies, it is very important that you firstly activate or 'unlock' the energies and attunement in this ebook. Once this is completed, you will then be ready to begin!

The activation is a very simple process, done by yourself, using a specially embedded activation code to 'unlock' the energies in this ebook. The four step process is outlined below and should only take you around five minutes or so to complete.

(For more information about the activation codes or the activation process - please visit our [Activation Codes FAQ's](#)).



■ 1) Preparation:

Please sit or lie down, whichever is more comfortable for you, and ensure that you will not be disturbed for at least 5 minutes or so. Perhaps you wish to play some [healing or relaxing music](#), light some candles or burn some incense to create a nice ambience.

■ 2) Invocation:

Invoke the activation ('unlocking') by placing your hands together, fingertips touching in prayer position and saying the following. ([Pronunciations for Maitrijusha & Maitrijusha-Ni are here.](#))



"With infinite grace, I ask humbly and clearly to activate the energies and attunements for Maitrijusha & Maitrijusha-Ni. With the unique activation code 2444108 may this be so. May this activation benefit all beings. Thankyou, thankyou, thankyou."

■ 3) Receiving:

If you wish to, you can now just sit for a few minutes as the energies are unlocked for you. After this period of time, as you feel ready, you may wish to give thanks. The activation is now complete!

■ 4) Understanding:

Once you have completed your activation, we ask that you now read through - "[Activation Codes and Prescribed Timeframes](#)". This will only take around a minute or so and will help you to receive the maximum benefits from all of these healing energies, attunements and practices. After this, you are now ready to begin opening up and receiving these beautiful Master Level Symbol energies! May you enjoy these with much love & light and with an intention to benefit all beings.



MAITRIJUSHA MASTER LEVEL SYMBOLS
VOLUME 1 - MAITRIJUSHA & MAITRIJUSHA-NI

CONTENTS:

Content	Page
Dedication	I
Prerequisites & Helpful Resources	II
Activating (Unlocking) The Maitrijusha & Maitrijusha-Ni Energies	III
Contents	IV
An Overview Of The Maitrijusha Master Level Symbols Series Of Energies	V
An Outline Of The Maitrijusha Master Level Symbols Series	VI
Welcome To Maitrijusha & Maitrijusha-Ni Master Level Symbols	1
Introducing MAITRIJUSHA & MAITRIJUSHA-NI	2
1. An Introduction To Working With Symbols	4
2. Receiving The Attunement For Maitrijusha & Maitrijusha-Ni	9
3. Instructions For Receiving Your Attunement	10
4. Introducing Maitrijusha	12
5. Introducing Maitrijusha-Ni	15
6. Using Maitrijusha And Maitrijusha-Ni Together	16
7. A Final Note About Your Practice	17
8. Final Comments	18

GET THE MOST CURRENT VERSION OF THE MAITRIJUSHA & MAITRIJUSHA-NI EBOOK!

Please note that this ebook is updated as further information comes to light, therefore before you begin, and periodically throughout your cleanse if you wish, please [visit our website](http://www.LoveInspiration.org.nz) to check you have the most current version. The version number and date are listed in the bottom right hand corner of each page of the book and only the version on our website will always be the most current.

AN OVERVIEW OF THE MAITRIJUSHA MASTER LEVEL SYMBOLS SERIES OF ENERGIES:

Welcome to the Maitrijusha Master Level Symbols series of energies. This series of energies has been brought through as a complement to both of our [Ascension Pathways](#) and can help you to more easily move towards a higher and more loving consciousness.

As you may be aware, Love Inspiration offers both of its Ascension Pathways freely and with love in the hope that we can provide a full energetic pathway towards the energetic vibration of '[The New Consciousness](#)'. During these Ascension Pathways, you will be guided through a series of very profound and transformational energy upgrades which can then help you to reach more love, light & peace in your life.

There are two main Ascension Pathways that you may choose from with each pathway being slightly different in its purpose, intention and perspective. Please click on either of the below links for more information about either of these two Ascension Pathways.

 [Pathway to Light](#)

 [The Unified Pathway To Light](#)

The Maitrijusha series of ebooks is therefore not strictly intended as a series of teachings to "follow" but rather, these energies will act as side-notes or stepping stones for helping you to progress more easily on each of these Ascension Pathways mentioned above. Having said this, if you are someone who is reading this ebook and you have not yet opened up to the Ascension Pathways - then this is also totally ok!

We are very happy to welcome you here with love & light and we are delighted that we can offer you these introductory & beautiful Maitrijusha & Maitrijusha-Ni energies for your healing practices. As a Reiki Master of one healing system, you will now be able to open up to these new tools which can help you to combine and bring together many energetic frequencies for added intensity!

As you start to progress through this series of ebooks, we do humbly & kindly ask that you please ensure that you have met all of the required prerequisites along the way. These prerequisites have all been divinely designed and will help you to move towards a higher and more harmonious vibration safely and effectively. At the beginning of each ebook, we outline the necessary prerequisites required for each volume to help you find your way more easily!

Please be aware that the energies in this Maitrijusha series do expand quite rapidly and extensively between each Volume and ebook and as such, the prerequisites are indeed quite steep and very necessary. It is therefore vitally important that the prerequisites are completed prior to moving forward into each ebook.

On the next page, you will find an outline in table format covering all of the Maitrijusha ebooks and their completion timeframes, along with the prerequisites that are required throughout the journey forward. With this, we hope to provide you with all of the necessary information so that you can have a think about your next steps forward with Love Inspiration.

We hope that you will enjoy these beautiful and uplifting Maitrijusha symbols and may these very profoundly purifying energies help to bring you much love, light & peace into your life!

MAITRIJUSHA MASTER LEVEL SYMBOLS
VOLUME 1 - MAITRIJUSHA & MAITRIJUSHA-NI

AN OUTLINE OF THE MAITRIJUSHA MASTER LEVEL SYMBOLS SERIES:

Please find below a tabled outline of the Maitrijusha Master Level Symbol Series:

Maitrijusha Master Level Symbols			
VOLUME	NAME	COMPLETION TIMEFRAME	PREREQUISITE
One	Maitrijusha & Maitrijusha-Ni	12 days (including a minimum prescribed practice of 11 days)	A Master of one healing system OR Pathway To Light Volume 1 - The Golden Mile
Two	Maitrijusha Gold Infinity	19 days	The Unified Pathway To Light - Master Level OR Pathway To Light Volume 3 - New Blue Moon OR Advanced Usui Reiki Master Teacher Level 9 AND Maitrijusha Volume 1
Three	Maitrijusha Gold Eternity	3 - 4 months	The Unified Pathway To Transcending The Light - Volume 2 OR Pathway To Light Volume 8 - The Grey Smoke AND Maitrijusha Volume 2
Four	Maitrijusha Complete	7 weeks	Blue Light - An Ascended Pathway To Faith & Higher Consciousness - Volume 1 - The Gateway AND Maitrijusha Volume 3

Welcome to
Maitrijusha Master
Level Symbols



Maitrijusha &
Maitrijusha-Ni



Love Inspiration

Learn • Heal • Awaken

MAITRIJUSHA MASTER LEVEL SYMBOLS VOLUME 1 - MAITRIJUSHA & MAITRIJUSHA-NI

INTRODUCING MAITRIJUSHA & MAITRIJUSHA-NI:

We welcome you to the Master Level Symbols MAITRIJUSHA & MAITRIJUSHA-NI course with our deepest love. We also congratulate you on taking this most exciting step forward in your healing and meditative pathway.

These symbols ([pronunciation here](#)) introduce us to a truly exciting concept in energy based healing, that of combining and amplifying energetic frequencies so that our healing and meditation can become more blissful, love filled and deepened.

The two symbols which will be introduced to you in these next few pages come from a place of purity, love and understanding. Their frequencies are almost unmatched in the symbol world and are deeply connected to the energies of the new consciousness.

Both symbols were brought through to Gerry through intuitive communications during a very special 'Puja' (blessing ceremony) which took place in June 2013. The energetic frequencies came through to us whilst we were in the presence of a great Guru, Mahasambodhi Dharmasangha, in Nepal.

The word 'maitri' means friendliness, loving kindness, oneness, inclusiveness, benevolence, compassion, awareness of and love for all living beings, without boundaries, without selfishness. It indicates a gentle loving kindness, directing love outward for the benefit of all, and that is devoid of egotistic sentiment, attachment, jealousy, envy, hatred, anger, rage, violence, brutality or killing. In the Maitri Dharma, this generally selfless, warm, serene and loving state of being is called maitribhav (the consciousness, heartset and mindset rooted in Maitri).

To receive these teachings in the presence of such a great Guru was deeply humbling as well as exciting as it represents that we may now be ready as a planet to receive these types of higher vibrational frequencies.

To introduce the symbols further we can share this information as it came through to us:



**“These (Maitrijusha & Maitrijusha-Ni)
symbols are amplifiers of energy.**

**Think of them as lenses - magnifying and
increasing energies.**

**They amplify the Maitri light.
They can be used with all energetic
frequencies in order to enhance them.”**

We welcome you to these delightful and loving frequencies and we hope you enjoy these practices as much as we have enjoyed them. May they bring you healing, cleansing and above all, love so that you may be happy in this precious human life.



1. AN INTRODUCTION TO WORKING WITH SYMBOLS:

Working with symbols in our healing and meditation provides a wonderful array of divine healing opportunities as they give us access to a larger selection of healing frequencies. Symbols are also very easy to practice with and give us a much added flexibility to our meditation and healing work.

For those of you who have already had some experience with symbols, we ask for your patience here as we will be running through what we consider the basics. Please keep in mind that different people will have different views about symbols so we ask that you approach this section with an open heart and mind.

For those who have never heard of symbols before, we would kindly ask you to please firstly have a read through our FAQ section about working with symbols. before starting here. This is mainly because, as a practitioner manual, we will be mostly focusing on the practical aspects of working with symbols in this section. We have provided a really good amount of theoretical information about symbols and the role they play in energy based healing on this FAQ page.

[Click here to visit our FAQ pages 'Using Symbols in Healing'](#)



Introduction to the practical aspects of symbols - MAITRIJUSHA & MAITRIJUSHA-NI:

Normally, when someone is being introduced to symbols, there are shown how to draw the symbol, they learn the name of the symbol and they are taught the technique for using that symbol in meditation and healing.

Here, in this practitioner manual, we will also follow this format but firstly, it is important for us to point out that the symbols being introduced here in the Master Level Symbols - Maitrijusha and Maitrijusha-Ni, are slightly different in the way they work in healing.

This is mainly because the Maitrijusha symbols being introduced here are both very special symbols indeed. These symbols help to complement and magnify other energetic frequencies and in this way, they are an incredibly useful tool for anyone working with a range of different healing frequencies.

The energies within these two symbols are also very closely linked with the energies of the new consciousness. In every situation, these frequencies will move you closer to love, light and an understanding of one-ness.

If this is your first introduction to working with symbols then this will be quite an extraordinarily introduction for you to symbol work. If you are progressing through to the Sorcebro Energy Suite, you will begin to understand the extremely special nature of these symbols.

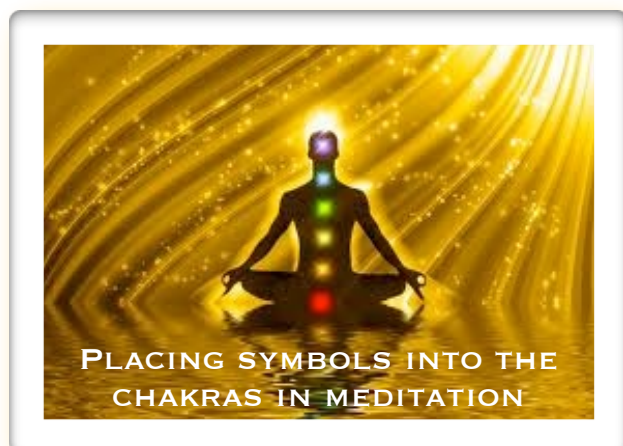
So firstly, it is a good idea for us to understand how to work with symbols more generally. From this basic level of understanding, we will then introduce how we are able to work with the Maitrijusha & Maitrijusha-Ni symbols.

A general, basic technique for working with symbols in meditation:

As we've said, in this manual you will be introduced to two very special symbols which you can now start to introduce in your practice. These symbols are very versatile and will give you the ability to work with many different frequencies in your meditation.

We will be providing you with all the information you require for using these symbols including how to draw the symbol, tell you it's sacred name (which helps us to invoke the energies) and we will also provide some general instructions on where to draw it / how to use it the healing practice.

In this section then, being the introductory section, we will now give you some helpful tips and guidance about how you may wish to work with symbols in a more general context. This is a very important basis for that which is to come noting that the Maitrijusha symbols can also be used in this way as you wish to.



Typically, when we work with symbols, we normally draw the symbol out, either mentally or with our index / middle finger of our preferred hand, above the area we are working with. Once we have done this, we simply tap it in 3 times whilst saying the sacred name silently to ourselves (3 times).

So, for example if we are putting the symbol into our crown chakra, we will firstly start by drawing the symbol out around 15 - 30 cm above the crown chakra (top of the head) and once drawn, we will quite literally 'tap' this into our energy field (3 times) whilst saying the name each time we tap it in i.e. saying the sacred name 3 times.

If you are a beginner, this method of physically drawing and tapping can be quite effective until you reach a point where you feel comfortable doing this process mentally i.e. through meditation.

This is probably the most commonly taught method of working with symbols and is very simple and easy to get started with:

1. ***Draw out symbol over chakra / area of body you are working with (physically or mentally).***
2. ***Tap the symbol into the chakra / area of body 3 times whilst saying the sacred name 3 times (physically or mentally).***

We can imagine the symbols melting into our energy in the same way butter would melt into toast. With time we can start to *feel* the symbol as it enters our energy and we can also start to feel its uniquely divine healing vibration.

We note here that the tapping process does not need to be a physical tapping. This process works equally well (perhaps even more so) if we are able to intend or mentally tap these in as we progress in our practice. You will quickly feel what your preferences are as you start to work with symbols in a regular practice.

Please also be aware that your preferences may change as you progress forwards on this working with symbols journey. Perhaps you start with this physical tapping technique for a month or so and as you feel ready to, you move to a more meditative approach.

The key is just to be loving and patient with yourself as you start out with these practices. For those experienced in working with symbols, you will probably already know that there are many, many variations which stem from this type of basic technique.



Additional ways that we can work with symbols in meditation:

Now that we are armed with a basic symbol technique, we can perhaps discuss some additional ways of working with these symbols in our healing and meditation. These additional techniques simply give us some variety with our practice and may help to invoke the energies in such a way which we feel more strongly.

We would always suggest that you work with techniques and practices which bring you a higher and more blissful states of vibration. When we can feel these deep states of inner peace, stillness and love filled energies in meditation, there is most certainly some very deep healing being done.

Ok so firstly, you can try experimenting with the 'tapping' aspects of the basic technique outlined above. Perhaps try tapping the symbols in 7 times or 11 times (instead of 3) as you wish. You may also wish to try tapping these symbols in many times over (more than 11) in order to create additional healing vibrations.

The number 3 is often held as sacred and it is thought to bring the abundance of these energies into physical manifestation. The number 7 is also a good number to work with and 11 is considered by many to be the golden number. You can choose to work with these numbers or any multiple thereof however equally so. This may be too much to focus on during the meditative practice in which case you may just wish to continually tap in the symbol as you feel appropriate.



As you progress also, the tapping process can almost become like you are visualising or intending for the symbol to enter you many times over without any need for a physical or mental 'tapping' process. For example, let's say that the symbol is to be placed into your third eye chakra. You would draw the symbol out, either mentally or physically and then simply imagine, visualise or intend that the symbol's vibration is continually flowing into your energy field.

As you do this, you may tap, tap & tap or imagine, visualise and intend until you can start to feel the vibrations really moving in through your third eye chakra and into your whole body. Over some minutes perhaps, you may feel the symbol's vibration as it flows through your entire energy field for the best possible healing result.

Equally, we could also imagine the symbol just above our third eye. Rather than drawing it out, we can simply visualise it there; perhaps it is made up of white light, shining beautifully, powerfully and very brightly. From here we can 'tap' this into our chakra or body part (as required).

Perhaps you just wish to receive the light directly from the symbol as it sits so iridescently above your third eye or crown chakra. The divine healing vibrations are entering your chakra and filling up your whole body. Be sure to keep the visualisation of the symbol firmly in your mind and continue to repeat the sacred name for further effectiveness.

Another option could be to visualise or intend many little symbols entering the chakra / body part you are working with. You just need to open up and surrender to the healing power of the symbol to receive the magical vibrations of love and light.

In addition to this, another way to work with symbols in meditation is to simply imagine a very large symbol vibrating and shining from within us. The symbol in this case may be as large as say your whole body. Just keep our meditative concentration focused on the visual aspects of the symbol whilst continuously saying its sacred name.

As we do this, for say 5 minutes, the energetic vibrations may deepen and deepen for us. We can even add in here the wish that the symbol shines for all beings in the world, the universe or the cosmos as you wish to.

We can also combine some of these techniques together. For example, you may be working with your crown chakra or your third eye chakra and drawing and tapping many times over. After some time, say 3-5 minutes, you may find that you can now feel energies starting to fill your body at which point you may wish to now start working with a big symbol, intending that it shine for all.



**VISUALISING A SYMBOL JUST
ABOVE THE THIRD EYE**

Most commonly, it is the feelings of surrender, opening up, letting go, gratitude, love, compassion and the altruistic intention which will help you in any symbol based practices. Visualisation, meditative concentration and the strength or purity of your intention also helps to strengthen our practice.

Again, there are many different ways that we can work with symbols in healing and meditation and we hope that these words and techniques will inspire your own divinely guided practice for the benefit of all. This is all part of the fun - to create and grow in a way which brings your practice to life. This can often be a very empowering part of your practice.

Please note that the techniques described here are some of the more popular or widely taught techniques. There are also many others not mentioned. Each person has their own mind and therefore can create their own unique techniques.

We have also not yet covered symbol based healing from a 'healing others' perspective as we are for now mainly focusing on the self-healing aspects of the practice. As it is said:

"As we heal ourselves, we also heal all"



2. RECEIVING THE ATTUNEMENT FOR MAITRIJUSHA & MAITRIJUSHA-NI:

The attunement process for Maitrijusha & Maitrijusha-Ni is very simple and will take approximately twenty minutes to complete. The attunement process can either be done in person or by distance.

Attunements are normally a very relaxing and enjoyable experience which helps to give the recipient access to the energies of each symbol, so that they can then begin to practice the healing techniques for themselves and for others.

From an energetic perspective, there is no difference whether you take an attunement by distance or in person. Although this is a widely disputed fact, we believe, after the extensive work we have done with energy healing attunements, that the quality of the attunement or your ability to access these symbol energies may even be *higher* through distance attunements.



NOTE: Before you receive your attunements, please ensure that you have activated (unlocked) the Maitrijusha & Maitrijusha-Ni energies and attunements prior to commencing.

The activation / unlocking process is a simple 5 minute process which unlocks the energies and gives you access to them. Once you have unlocked the energies, this means that all the Maitrijusha & Maitrijusha-Ni energies and both your Maitrijusha and Maitrijusha-Ni attunements have been activated specifically for you.

You are therefore then ready to continue your Maitrijusha journey by working through this ebook, at your own pace and receiving the energies as you feel guided.



If you have not yet activated / unlocked the Maitrijusha & Maitrijusha-Ni energies for yourself, you may do this by following the instructions on Page III of this ebook.



3. INSTRUCTIONS FOR RECEIVING YOUR ATTUNEMENT:

To ensure that the attunement process works successfully we ask that you follow the below instructions as best you can. Most importantly, please relax, open up and receive these beautiful and expansive healing gifts with love.

Once you have unlocked the energies, you will now be able to simply follow along with the process outlined below for receiving the attunement.

■ 1. Preparation

Sit or lie down, whichever is more comfortable for you, ensuring that you will not be disturbed for at least 15 minutes. Perhaps you wish to play some soft [healing or relaxing music](#), light some candles or burn some incense to create a nice ambience.



**HANDS IN PRAYER
POSITION**

■ 2. Invoke the first attunement; Maitrijusha

Invoke the Maitrijusha attunement by placing the hands together, fingertips touching in prayer position whilst saying the following:



**"With love and gratitude I ask to please open my
energy to the Maitrijusha attunement
in order to benefit all beings.
Thankyou, Thankyou, Thankyou."**

*[Note: The word love is underlined in the invocation because the stronger the feeling of love that you ask with, the stronger the energy that flows into the attunement. Also, when we add the highest intention for **all beings to benefit** (in anything we do), the energy is also stronger.]*

Now your attunement will commence and will take around 5-8 minutes to complete, so it is best to sit or lie down for around 10 minutes. You can time yourself or simply wait until you feel the energy drop off a little bit. The energy tends to build over the attunement timeframe with the energy at the end of the attunement being much stronger, so if you don't feel anything at the beginning, don't worry – it is still working!

And you don't have to leave your hands in prayer position for the entire time, please feel free to rest your hands either by your side, over your heart chakra or as you feel most comfortable.

When you feel the energy drop off, or after about 10 minutes, you may then invoke the second attunement.

■ **3. Invoke the second attunement; Maitrijusha-Ni**

This attunement is invoked in exactly the same way as the Maitrijusha attunement. Simply place the hands together, fingertips touching in prayer position and say the following:



"With love and gratitude I ask to please open my energy to the Maitrijusha-Ni attunement in order to benefit all beings. Thankyou, Thankyou, Thankyou."

Now your second attunement will commence and will again take around 5-8 minutes to complete, so **it is best to sit or lie down for around 10 minutes**. You can time yourself or simply wait until you feel the energy drop off a little bit.

You may feel some energy moving, perhaps feel relaxing vibrations or some may feel almost nothing happen. Either way, you have now received both attunements and will be able to practice the techniques described in this manual.

■ **4. Closing the attunement**

As always, we close our attunement with love and gratitude.



"With love and gratitude I offer my sincerest thanks for receiving the divine Maitrijusha & Maitrijusha-Ni attunements. May I use this new energy for the benefit of all. Thankyou, Thankyou, Thankyou."



4. INTRODUCING MAITRIJUSHA:

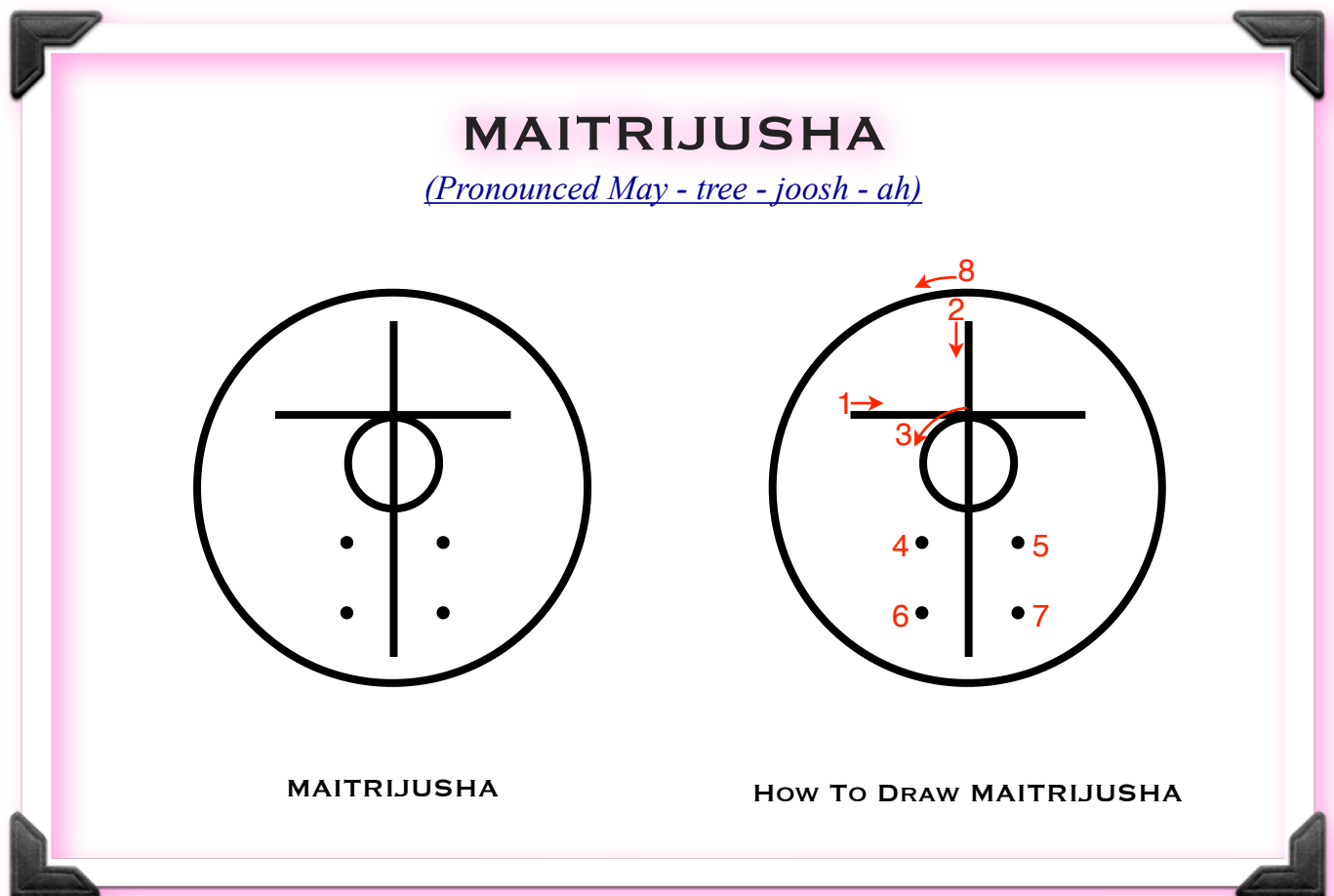
The symbol Maitrijusha represents a deeply loving and very unique symbol which enables us to combine a number of different energetic frequencies. In all of our practices, we are yet to see a symbol which consolidates and brings together different healing energies in such a beautiful and powerful way.

This symbol will help to magnify, intensify and bind many different frequencies in order to strengthen the effectiveness of your healing and meditation work. It is truly a blessed energetic frequency and we hope that you enjoy working with its love filled vibrations.

What the guides say about the symbol Maitrijusha:

- ♥ It helps us to reveal the true divine essence.
- ♥ It is like a catalyst to enhance all other frequencies.
- ♥ It joins all the master symbols.
- ♥ It is a white light shining out for all.

The symbol Maitrijusha:

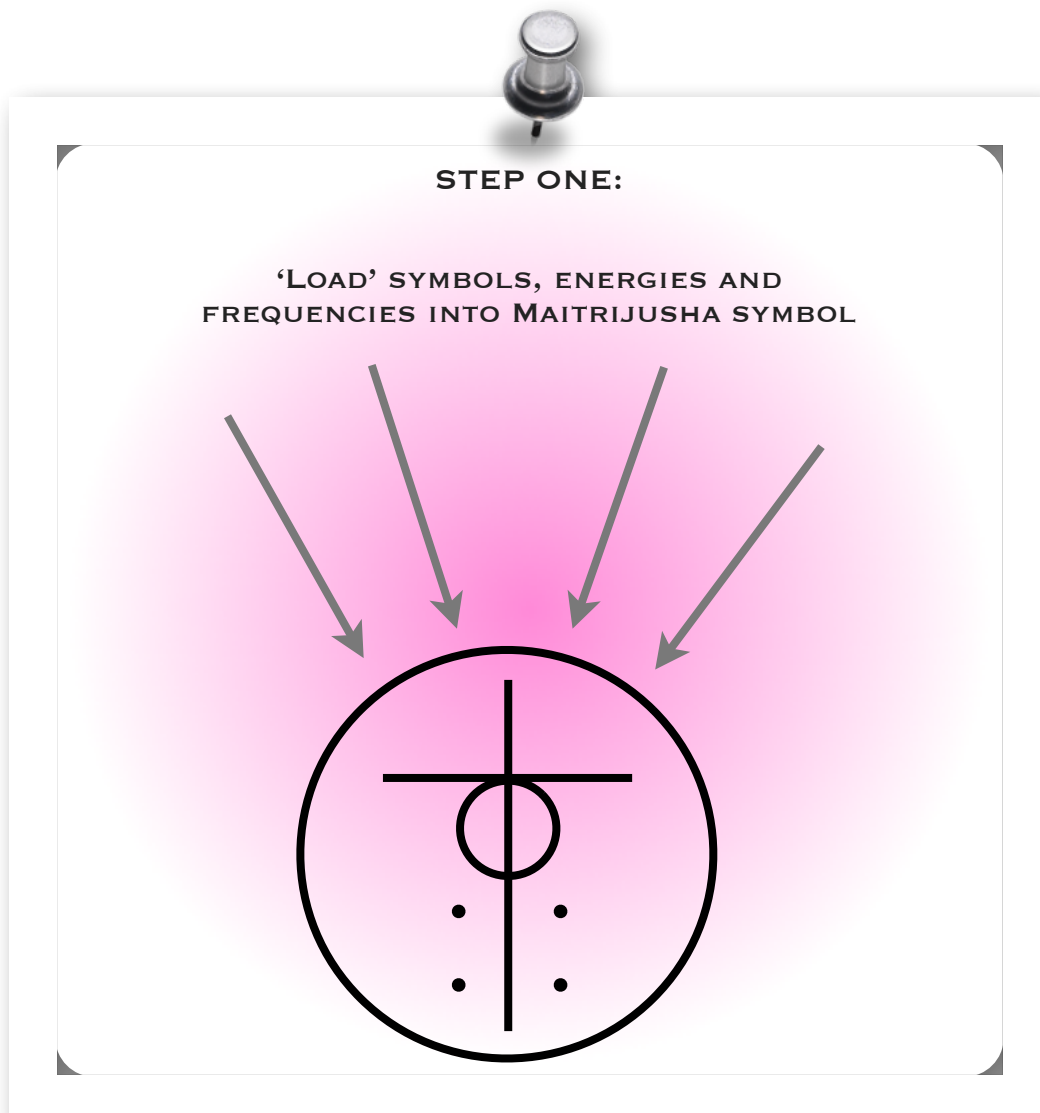


How To Use Maitrijusha:

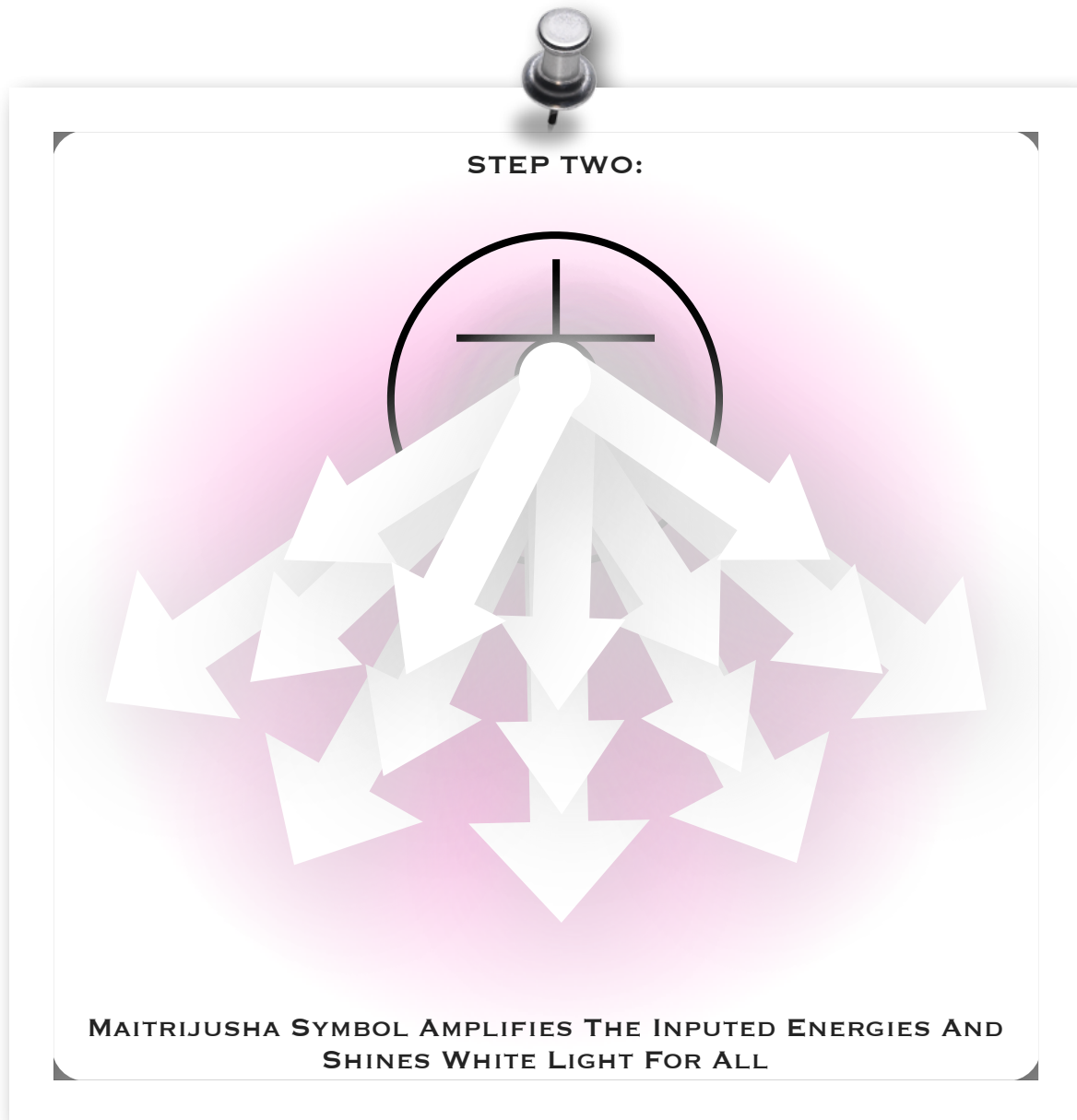
► **STEP ONE:** Simply "load" all energies, frequencies and symbols that you wish to into the Maitrijusha symbol. (Like filling a bucket). For example a symbol from Divine Light or Usui Reiki or a frequency from Kundalini Reiki or Celestine Reiki. As all frequencies are divinely guided to do their work, you can only ever create a beautiful mix of energies (i.e do not be afraid to experiment with mixing different energies). There is no minimum or maximum amount of energies that you can mix, simply go with what you feel.

To fill the Maitrijusha symbol, simply mentally draw the symbol, then draw the other symbols and "direct" them into the centre of Maitrijusha. For healing frequencies, simply invoke the energies and again imagine them going them into the Maitrijusha symbol. As long as your intention is there, the energies will work together no matter how you "position" them.

Note that the Guides have not given any specific/exact amount of time required to 'load' the energies/frequencies/symbols into the Maitrijusha symbol, so this is entirely up to you and what feels right. Some energies/frequencies/symbols may take longer to load than others and if you are loading many different ones then this will obviously also take longer. As always, trust your intuition - and take time to practice & experiment with the energies to see what works best!



- ▶ STEP TWO: The Maitrijusha symbol will then bind and consolidate the energies you have put in - and then shine the amplified energies from the circle in the centre of the symbol, outwards.



Where to place the Maitrijusha symbol:

The Maitrijusha symbol can be placed above you, allowing the shining light to wash over you. Or it can be placed inside you, allowing the light to shine inside you radiating out. You can of course also use this symbol in other places such as in/above the earth, universe or more specifically families, communities, towns, countries, lakes, mountains etc. Anyone or thing you would like to send energy to. As always, use it where you feel it will be most helpful.

In addition, feel free to check out the [Love Inspiration Community Facebook Group page](https://www.facebook.com/loveinspirationcommunity) to view comments and ideas from others to see how/where they are using the Maitrijusha symbol. Everyone is unique in their approach to energy based healing so its always great to see what others are trying! [You can use the search function on the left hand side of the group page to type in keywords (for example 'Maitrijusha') and then any posts in the group with those words will appear]. Enjoy!

5. INTRODUCING MAITRIJUSHA-NI:

The MaitriJusha-Ni symbol comes from a place of deep love, understanding and divinity and is particularly effective in purification and healing work, thus allowing us to move closer towards love and light.

Where the MaitriJusha symbol allows us to combine many different frequencies to bring a brighter suite of energetic frequencies into our meditation, the MaitriJusha-Ni symbol helps us to remove impurities, imperfections and other negative energies within our body.

As we will outline a little further on, we can also work with both the MaitriJusha & MaitriJusha-Ni symbols to create a very special energetic cleanse, one which is also complementary to other forms of energy based healing practices.

We hope that you enjoy these MaitriJusha-Ni frequencies and may they help to heal, purify and bring a heightened sense of love and light into your consciousness for the benefit of all beings.

What the guides say about the MaitriJusha-Ni symbol:



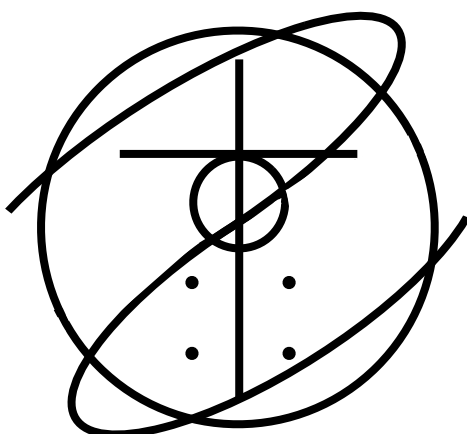
It is the “energy of supreme enhancement”.

The symbol “burns red-hot, drawing out impurities”.

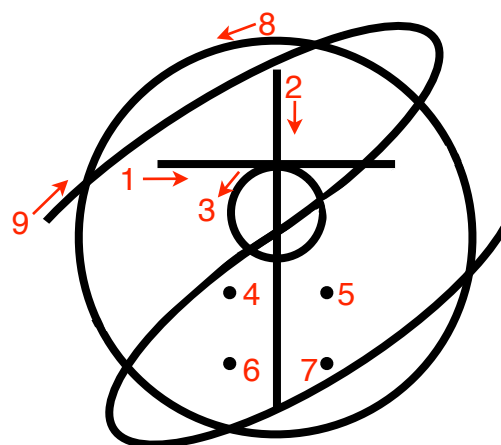
The symbol MaitriJusha-Ni:

MAITRIJUSHA-NI

(pronounced May - tree - joosh - ah - Nee)



MAITRIJUSHA - NI



HOW TO DRAW MAITRIJUSHA-NI

How To Use Maitrijusha-Ni:

On its own, Maitrijusha-Ni can be drawn over a specific blockage or area in the body in order to draw out impurities. It can also be drawn onto the palms of the hands whilst giving healing hands-on to either yourself or another person. (You do not load symbols into this symbol like we did with Maitrijusha- it simply works on its own to draw out impurities).

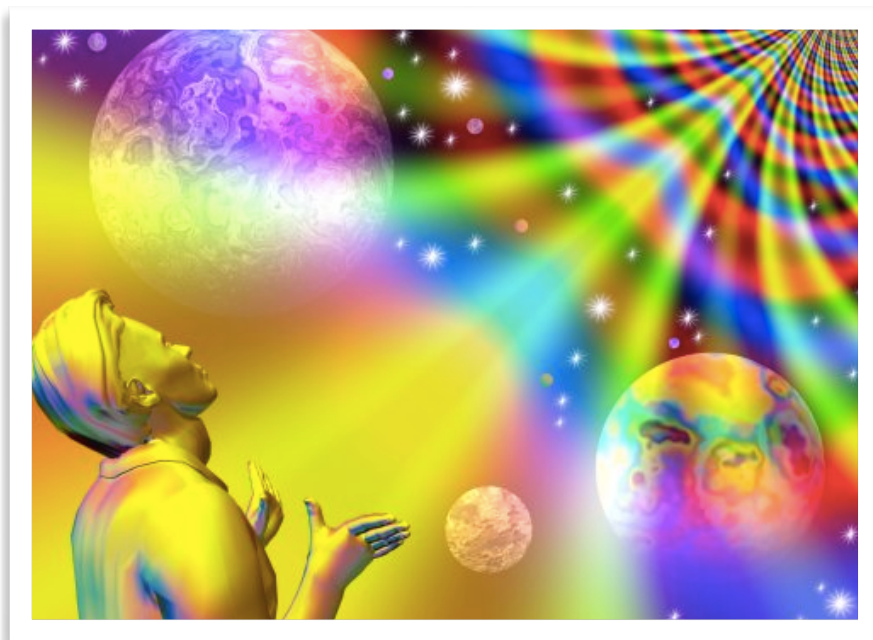
However, for the best use - try using Maitrijusha-Ni with Maitrijusha together as detailed in the section below.

6. USING MAITRIJUSHA AND MAITRIJUSHA-NI TOGETHER:

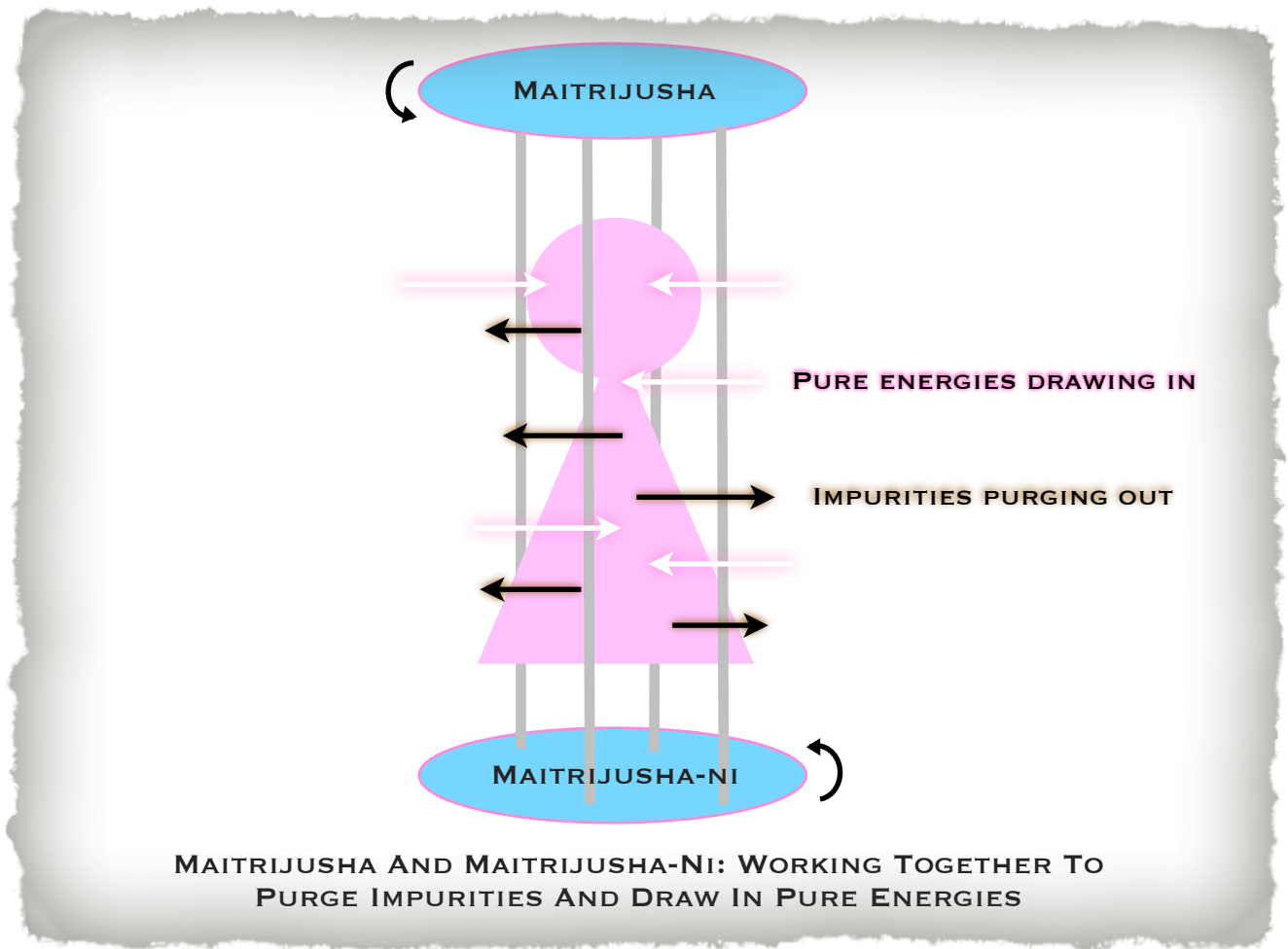
As you have hopefully now seen, Maitrijusha and Maitrijusha-Ni are almost complete opposites of each other. Maitrijusha amplifies and shines energy. Maitrijusha-Ni draws out impurities.

Each symbol can be used on its own, for the benefit of its specific qualities, or the two symbols can be used together in a powerful way to move large energy blockages and as a cleanse for the whole energy system.

**TOGETHER, MAITRIJUSHA AND MAITRIJUSHA-NI AMPLIFY THE RELEASE
OF IMPURITIES AND THE INTAKE OF PURE ENERGIES**



To use the symbols together, simply draw Maitrijusha above the head & Maitrijusha-Ni below the feet. The four dots inside each symbol then align with each other forming "energy rods" through your energy body. The symbols then twist around, alternating backwards & forwards, purging impurities from the body and drawing pure energies into the body. Please refer to the diagram below.



To enhance any healing or meditative session, simply draw the symbols as described at the beginning of the session. The symbols will work continually in the background whilst you are doing your other healing/meditative work.

7. A FINAL NOTE ABOUT YOUR PRACTICE:

Within this manual, we have tried our best to explain some of the ways that you can start practising with these symbols so that you can maximise your healing vibrations, either in personal meditation or in helping others to 'heal'.

We have also provided you with additional information about how you can start to use these two new frequencies to create a deeply cleansing & loving vibration for your meditation. You may also wish to experiment with this in your healing practices.

It is here where all the fun starts as we encourage you to now try out some of these techniques as you digest these energies further into your consciousness. For any kind of energy based healing, we suggest that you allow at least a few weeks of regular daily practice so that you can become more familiar with these energies.

For example, *you may wish to complete the Maitrijusha & Maitrijusha-Ni cleanse twice daily - once in the morning and once in the evening, for a period of 11 days.* You may also wish to work with the Maitrijusha frequencies in your meditations & healing sessions as you wish to. As you continue to work with these energies you will be handsomely rewarded with much healing, love and purification!

For those of you working with other symbols, you may also wish to try 'loading up' Maitrijusha with other frequencies and see how you feel. If this works for you, then you are able to make this a regular ongoing practice. Remember also to check out the [Love Inspiration Community Facebook Group page](#) to view comments and ideas from others to see how they are using the Maitrijusha symbol and feel free to post about your own experiences with these beautiful energies! Sharing is a great way to connect and learn more!

We always suggest that you choose what works for you in your own meditation and healing. If you find that these energies resonate with you then these techniques may bring you much love, light & healing over many years.



8. FINAL COMMENTS:

We hope that you have enjoyed the Maitrijusha & Maitrijusha-Ni attunements and the work that you are beginning to do with them.

These symbols work well on their own, together and also in conjunction with other symbols such as those in The Sorcebro Energy Suite (The Unified Pathway To Light).



Looking forwards now and for those of you who are interested to receive the next set of Maitrijusha energies, Volume 2 - Maitrijusha Gold Infinity, we invite you here with much love in our hearts to start walking on one of our [Ascension Pathways](#) which is a prerequisite.

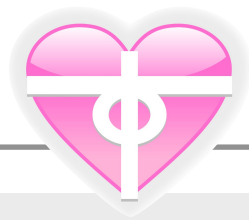
The [Ascension Pathways](#) are our most direct road into Higher Consciousness and are therefore very beneficial and helpful for those who wish to feel and experience very pure states of love, light and purity.

For now though, we hope that you will enjoy your Maitrijusha & Maitrijusha-Ni practice and may it bring you energetic strength, fulfilment and much love so that you may shine for all beings and help them to be free from suffering.

With Divine Maitri Light,

**LOVE INSPIRATION &
MAITRI FOUNDATION**





WOULD YOU LIKE TO HELP?

You have received these energies and teachings freely and with love due to the humble and altruistic grace of our donors, sponsors, teachers & translators. If you have enjoyed these energies and would like to help make them continually and freely available for others to heal, grow and awaken from, we lovingly invite you to help in the following ways:

- 💖 [MAKE A DONATION](#)
- 💖 [SPONSOR AN EBOOK](#)
- 💖 [HELP US FUNDRAISE](#)
- 💖 [DONATE A HEALING SESSION](#)
- 💖 [DONATE A REIKI EVENT](#)
- 💖 [SHARE WITH OTHERS](#)
- 💖 [TRANSLATE FOR OTHERS](#)
- 💖 [BECOME A TEACHER](#)
- 💖 [WRITE A TESTIMONIAL](#)
- 💖 [HELP US IMPROVE](#)

Your help enables Love Inspiration to continue offering ebooks and courses freely for the infinite benefit of all.

Blessings & Thankyou,
LOVE INSPIRATION & MAITRI FOUNDATION

FOR THE BENEFIT OF ALL

May all be absolutely & infinitely happy and free from suffering.